

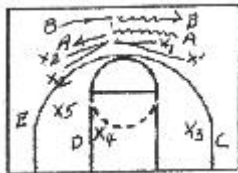
## Switching Person-to-Person Defense

A switching person-to-person defense was the main defense Coach Arad McCutchan used while I sat on his bench. Coach McCutchan brought it with him from Bosse High School in Evansville, Indiana. This was the defense used by the Bulldogs when they racked-up two Indiana State championships in a row during 1944 and 1945. This defense is an oldie, but a goodie.

This defense is one in which the defensive players switch on every offensive cross, **except for the player defending the pivot**. If offensive guards are crossing laterally in the backcourt, a jump switch is very effective. The switching players are usually guards and forwards. If the center **must** switch while defending the pivot against a two-three offense, the center **must** call the switch, otherwise, his, or her, teammates will not expect it. If the opponents use a three out and two in, the defenders should switch on all crosses with **all five** players.

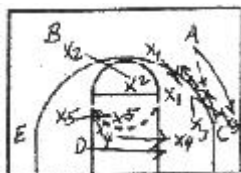
The switching defense is extremely effective against the weave, or an offense using good guard-to-guard or guard-to-forward screens. It confuses the offense, as it looks like a zone defense. The weak-side players sag toward the middle, playing their opponents loosely.

The switching person-to-person is excellent for a team that has one big player and four smaller players.



**Diagram #13a - Against a Two-Three Offense** - Offensive guards **A** and **B** exchange the ball in the backcourt.  $X_1$ , guarding **A**, and  $X_2$ , guarding **B**, move together as **A** dribbles and hands off to **B** who is cutting behind.  $X_1$  and  $X_2$  automatically switch with  $X_1$  picking up **B** who has begun to dribble, and  $X_2$  picking up **A**.  $X_3$  is playing an intercepting angle on **C**,

$X_4$  defends **D** in the low-post on the ball-side, and  $X_5$  has floated toward the center and a little higher guarding the opposite corner. If **B** attempts to pass under these circumstances, there is a good opportunity to intercept this pass.



**Diagram #14a** - **A** passes to **C**, who moves out to meet the pass. **A** cuts behind **C** and  $X_1$  moves with **A**. Likewise,  $X_3$  has moved out with **C**. **C** starts his dribble and as **A** and **C** cross  $X_1$  and  $X_3$  automatically switch,  $X_3$  defending **A** and  $X_1$  picking up the dribbler.