

Red White Blue

"Blue"

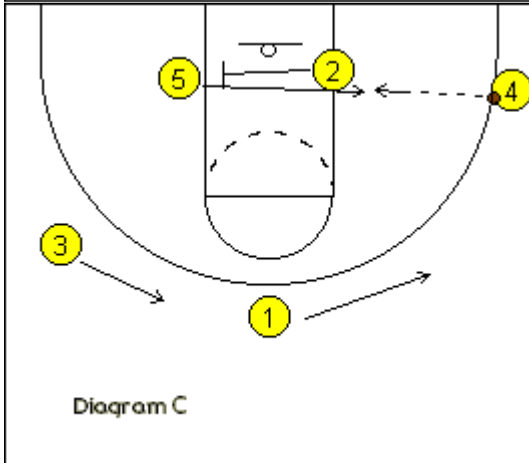
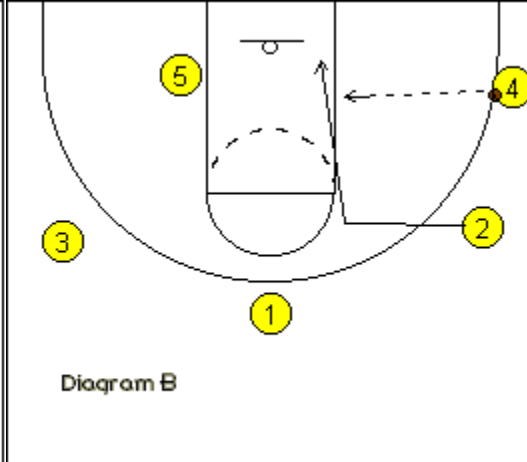
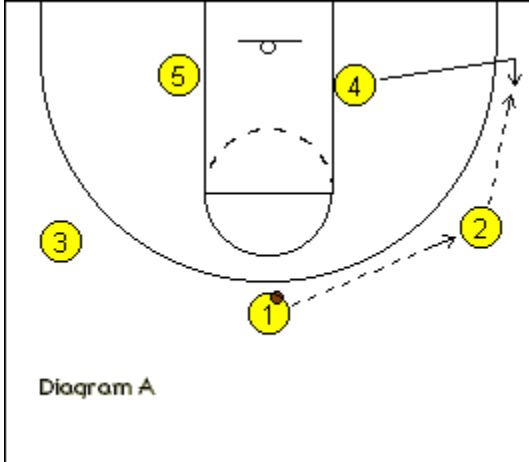


Diagram A. O1 passes to O2, who passes to O4 in the corner.

Diagram B. O2 makes a lane cut and could get the pass from O4 for the layup. If the pass is not there, go to diagram C.

Diagram C. O2 sets a screen for O5. O5 cuts to the ballside block and gets the pass from O4.

"Red" This play is similar to "White" (see below) except here O1 just makes the pick for O5.

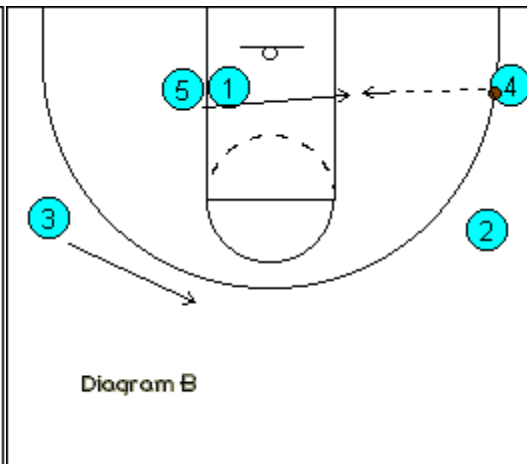
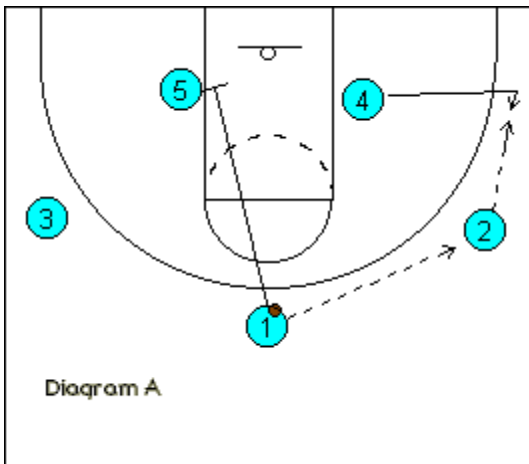


Diagram A. O1 passes to O2. O1 sprints down and sets a pick for O5.

Diagram B. O4 passes to O5 for the low post lay-up.

"White" This play is similar to "Blue" except here O1 makes the lane cut.

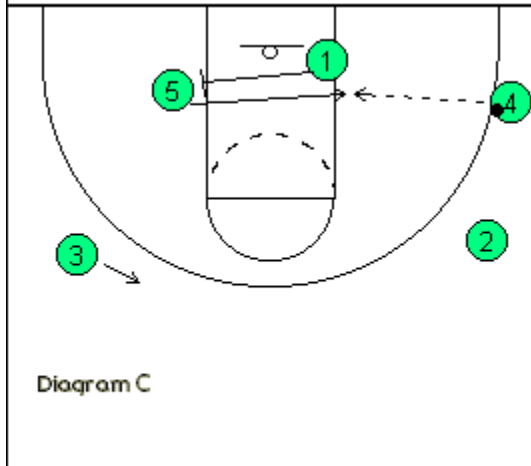
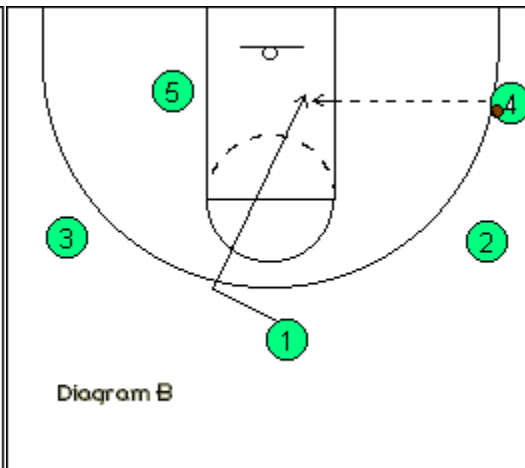
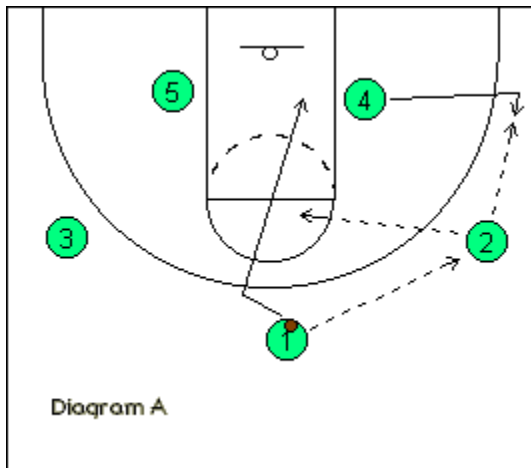


Diagram A. O1 passes to O2. O2 either passes to O1 cutting thru the lane, or to O4 in the corner.

Diagram B. O4 can pass to O1 for layup. If the pass is not there, go to diagram C.

Diagram C. O1 sets a screen for O5. O5 cuts to the ballside block and gets the pass from O4.